

National Testing Agency

Question Paper Name: GPAT Set2
Subject Name: GPAT
Creation Date: 2019-01-28 18:58:37
Duration: 180
Total Marks: 500
Display Marks: Yes
Share Answer Key With Delivery Engine: Yes
Actual Answer Key: Yes

GPAT

Group Number : 1
Group Id : 416529145
Group Maximum Duration : 0
Group Minimum Duration : 180
Revisit allowed for view? : No
Revisit allowed for edit? : No
Break time: 0
Group Marks: 500

Other Subjects

Section Id : 416529219
Section Number : 1
Section type : Online
Mandatory or Optional: Mandatory
Number of Questions: 11
Number of Questions to be attempted: 11
Section Marks: 44
Display Number Panel: Yes
Group All Questions: No

Sub-Section Number: 1
Sub-Section Id: 416529343
Question Shuffling Allowed : Yes

Question Number : 1 Question Id : 41652911905 Question Type : MCQ Option Shuffling : Yes Display Question Number : Yes
Single Line Question Option : No Option Orientation : Vertical
Correct Marks : 4 Wrong Marks : 1

In India the patent office has its head office at Kolkata and branch offices at :

Options :

41652946462. Mumbai, Chennai and New Delhi

41652946463. Kashmir, Ahmedabad and Trivandrum

41652946464. Chandigarh, Hyderabad and Goa

41652946465. Dibrugarh, Indore and Vapi

**Question Number : 2 Question Id : 41652911906 Question Type : MCQ Option Shuffling : Yes Display Question Number : Yes
Single Line Question Option : No Option Orientation : Vertical**

Correct Marks : 4 Wrong Marks : 1

Penalty for the cultivation of any cannabis plant to produce, sell, purchase transport in contravention of Narcotic Drugs and Psychotropic substances Act and Rules on First conviction is :

Options :

41652946466. Rigorous imprisonment up to 10 years or fine up to Rs. 1 Lakh

41652946467. Rigorous imprisonment up to 6 months

41652946468. Fine up to Rs. 10 Lakh

41652946469. Rigorous imprisonment up to 10 years or fine up to Rs. 10 Lakhs

**Question Number : 3 Question Id : 41652911907 Question Type : MCQ Option Shuffling : Yes Display Question Number : Yes
Single Line Question Option : No Option Orientation : Vertical**

Correct Marks : 4 Wrong Marks : 1

Choose the CORRECT statement with respect to 'The Pharmacy Act, 1948' :

Options :

41652946470. Section 12 of the act deals with the approval of course of study under chapter 2 thereof.

41652946471. Section 12 of the act deals with the approval of course of study and examination under chapter 2 thereof.

41652946472. State Govt. is authorised to make any rules with respect to course of study.

41652946473. Education regulation 1991 dose not prescribe the minimum qualification for the registration as Pharmacist

**Question Number : 4 Question Id : 41652911908 Question Type : MCQ Option Shuffling : Yes Display Question Number : Yes
Single Line Question Option : No Option Orientation : Vertical**

Correct Marks : 4 Wrong Marks : 1

As per the Medical Termination of Pregnancy Act and rules, the safe custody of "Forms" is with :

Options :

41652946474. Registered Medical Practitioner

41652946475. Chief Medical Officer

41652946476. Owner of the approved place

41652946477. Standing committee

Question Number : 5 Question Id : 41652911909 Question Type : MCQ Option Shuffling : Yes Display Question Number : Yes
Single Line Question Option : No Option Orientation : Vertical

Correct Marks : 4 Wrong Marks : 1

ELISA is based upon :

Options :

41652946478. Antigen Antibody Interaction

41652946479. Antigen Protein Interaction

41652946480. Lectin - Antibody Interaction

41652946481. Antibody protein Interaction

Question Number : 6 Question Id : 41652911910 Question Type : MCQ Option Shuffling : Yes Display Question Number : Yes
Single Line Question Option : No Option Orientation : Vertical

Correct Marks : 4 Wrong Marks : 1

For protein detection most commonly used probe is :

Options :

41652946482. Antibody

41652946483. Lectin

41652946484. Antigen

41652946485. Interferon

Question Number : 7 Question Id : 41652911911 Question Type : MCQ Option Shuffling : Yes Display Question Number : Yes
Single Line Question Option : No Option Orientation : Vertical

Correct Marks : 4 Wrong Marks : 1

The relation between emissive power of the surface and its absorptivity is given by :

Options :

41652946486. Fourier's Law

41652946487. Stefan - Boltzmann Law

41652946488. Kirchhoff's Law

41652946489. Darcy's Law

Question Number : 8 Question Id : 41652911912 Question Type : MCQ Option Shuffling : Yes Display Question Number : Yes
Single Line Question Option : No Option Orientation : Vertical

Correct Marks : 4 Wrong Marks : 1

Hardinge mill is a variant of :

Options :

41652946490. Fluid energy mill

41652946491. Ball mill

41652946492. Hammer mill

41652946493. Rotary cutter mill

Question Number : 9 Question Id : 41652911913 Question Type : MCQ Option Shuffling : Yes Display Question Number : Yes
Single Line Question Option : No Option Orientation : Vertical

Correct Marks : 4 Wrong Marks : 1

In Direct, Contact or Jet condensers, barometric leg serves one of the following functions :

Options :

41652946494. To measure the pressure difference across the tube

41652946495. To transfer the feed in to the evaporating chamber

41652946496. To remove the condensate/cooling water mixture

41652946497. To Heat the liquid feed to it's boiling point

Question Number : 10 Question Id : 41652911914 Question Type : MCQ Option Shuffling : Yes Display Question Number : Yes
Single Line Question Option : No Option Orientation : Vertical

Correct Marks : 4 Wrong Marks : 1

Which of the following is considered as differentiated product ?

Options :

41652946498. Ranitidine

41652946499. Paracetamol

41652946500. Isoniazid

41652946501. Zantac



Question Number : 11 Question Id : 41652911915 Question Type : MCQ Option Shuffling : Yes Display Question Number : Yes
Single Line Question Option : No Option Orientation : Vertical

Correct Marks : 4 Wrong Marks : 1

Consumer who are loyal to two-three brands are considered as :

Options :

41652946502. Switcher loyals

41652946503. Shifting loyals

41652946504. Split loyals

41652946505. Semi-core loyals

Pharmaceutical Chemistry

Section Id :	416529220
Section Number :	2
Section type :	Online
Mandatory or Optional:	Mandatory
Number of Questions:	38
Number of Questions to be attempted:	38
Section Marks:	152
Display Number Panel:	Yes
Group All Questions:	No

Sub-Section Number:	1
Sub-Section Id:	416529344
Question Shuffling Allowed :	Yes

Question Number : 12 Question Id : 41652911916 Question Type : MCQ Option Shuffling : Yes Display Question Number : Yes
Single Line Question Option : No Option Orientation : Vertical

Correct Marks : 4 Wrong Marks : 1

This semisynthetic derivative of penicillin is synthesized by acylation of 6-APA with *p*-hydroxy phenyl glycine :

Options :

41652946506. Carbenicillin

41652946507. Ampicillin

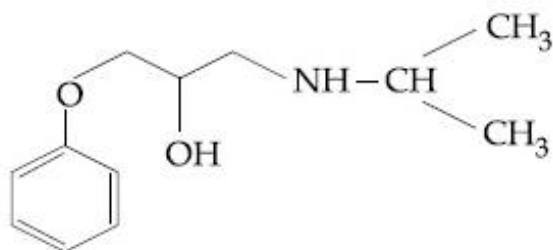
41652946508. Becampicillin

41652946509. Amoxicillin

Question Number : 13 Question Id : 41652911917 Question Type : MCQ Option Shuffling : Yes Display Question Number : Yes
Single Line Question Option : No Option Orientation : Vertical

Correct Marks : 4 Wrong Marks : 1

Identify the name of drug with the following structure :



Options :

- 41652946510. Betaxolol
- 41652946511. Esmolol
- 41652946512. Bisoprolol
- 41652946513. Metoprolol

Question Number : 14 Question Id : 41652911918 Question Type : MCQ Option Shuffling : Yes Display Question Number : Yes
Single Line Question Option : No Option Orientation : Vertical

Correct Marks : 4 Wrong Marks : 1

Which of the following pair of drugs is considered as selective α_1 -Blockers ?

Options :

- 41652946514. Formoterol and Levalbuterol
- 41652946515. Yohimbine and Carynanthine
- 41652946516. Prazosin and Terazosin
- 41652946517. Timolol and Metoprolol

Question Number : 15 Question Id : 41652911919 Question Type : MCQ Option Shuffling : Yes Display Question Number : Yes
Single Line Question Option : No Option Orientation : Vertical

Correct Marks : 4 Wrong Marks : 1

The basic ring system present in the antihypertensive and antiglaucoma drug "Timolol" is :

Options :

- 41652946518. 1, 2, 4 - Thiadiazole and Morpholine
- 41652946519. 1, 2, 5 - Thiadiazole and Morpholine
- 41652946520. 1, 3, 5 - Thiadiazole and Morpholine
- 41652946521. 1, 3 - Thiazole and Morpholine

Question Number : 16 Question Id : 41652911920 Question Type : MCQ Option Shuffling : Yes Display Question Number : Yes
Single Line Question Option : No Option Orientation : Vertical

Correct Marks : 4 Wrong Marks : 1

Which of the following second generation β_1 - selective blockers contains 1, 3, 5, - thiadiazole ring in its structure ?

Options :

41652946522. Pindolol

41652946523. Sotalol

41652946524. Timolol

41652946525. Penbutolol

Question Number : 17 Question Id : 41652911921 Question Type : MCQ Option Shuffling : Yes Display Question Number : Yes
Single Line Question Option : No Option Orientation : Vertical

Correct Marks : 4 Wrong Marks : 1

The following combination of drugs are used in treating severe travellers diarrhoea :

Options :

41652946526. Pyrimethamine and sulfadiazine

41652946527. Pyrimethamine and sulfamethoxazole

41652946528. Trimethoprim and sulfamethoxazole

41652946529. Trimethoprim and sulfadiazine

Question Number : 18 Question Id : 41652911922 Question Type : MCQ Option Shuffling : Yes Display Question Number : Yes
Single Line Question Option : No Option Orientation : Vertical

Correct Marks : 4 Wrong Marks : 1

The structural features present in anti-cancer antibiotics (Doxorubicin, Daunorubicin, Idarubicin and Epirubicin) are

Options :

41652946530. Anthracene nucleus fused to cyclohexane ring that is subsequently connected with amino sugar via glycosidic linkage

41652946531. Phenanthrene nucleus fused to cyclohexane ring that is subsequently connected with amino sugar via glycosidic linkage

41652946532. Naphthalene nucleus connected with amino sugar via glycosidic linkage

Quinoline nucleus connected with amino sugar via glycosidic linkage

41652946533.

Question Number : 19 Question Id : 41652911923 Question Type : MCQ Option Shuffling : Yes Display Question Number : Yes
Single Line Question Option : No Option Orientation : Vertical

Correct Marks : 4 Wrong Marks : 1

The following ACE inhibitor used in treating cardiovascular disorder is synthesized from the natural amino acids L-alanine and L-proline :

Options :

41652946534. Lisinopril

41652946535. Enalapril

41652946536. Captopril

41652946537. Ramipril

Question Number : 20 Question Id : 41652911924 Question Type : MCQ Option Shuffling : Yes Display Question Number : Yes
Single Line Question Option : No Option Orientation : Vertical

Correct Marks : 4 Wrong Marks : 1

Choose the correct sequence of process during Atomization in atomic absorption spectroscopy :

Options :

41652946538. Desolvation → Nebulization → Volatilization → Dissociation → Ionization

41652946539. Desolvation → Nebulization → Dissociation → Volatilization → Ionization

41652946540. Nebulization → Desolvation → Volatilization → Dissociation → Ionization

41652946541. Nebulization → Volatilization → Desolvation → Dissociation → Ionization

Question Number : 21 Question Id : 41652911925 Question Type : MCQ Option Shuffling : Yes Display Question Number : Yes
Single Line Question Option : No Option Orientation : Vertical

Correct Marks : 4 Wrong Marks : 1

Which among the following carrier gases has the highest thermal conductivity ?

Options :

41652946542. Oxygen

41652946543. Compressed Air

41652946544. Helium

Nitrogen

41652946545.

Question Number : 22 Question Id : 41652911926 Question Type : MCQ Option Shuffling : Yes Display Question Number : Yes
Single Line Question Option : No Option Orientation : Vertical

Correct Marks : 4 Wrong Marks : 1

pM indicators are used in :

Options :

41652946546. Redox titrations

41652946547. Acid-base titrations

41652946548. Non-Aqueous titrations

41652946549. Complexometric titrations

Question Number : 23 Question Id : 41652911927 Question Type : MCQ Option Shuffling : Yes Display Question Number : Yes
Single Line Question Option : No Option Orientation : Vertical

Correct Marks : 4 Wrong Marks : 1

Amylopectin, a component of starch gives _____ colour with iodine

Options :

41652946550. Blue

41652946551. Red-purple

41652946552. Green

41652946553. No colour

Question Number : 24 Question Id : 41652911928 Question Type : MCQ Option Shuffling : Yes Display Question Number : Yes
Single Line Question Option : No Option Orientation : Vertical

Correct Marks : 4 Wrong Marks : 1

Permitted tolerance limit for a 100 mL class B volumetric flask and 1000 mL class B volumetric flask according to BS 1792 specifications respectively are _____ mL.

Options :

41652946554. 1.00 and 10.00

41652946555. 0.15 and 1.5

41652946556. 0.80 and 0.30

41652946557. 0.15 and 0.80

Question Number : 25 Question Id : 41652911929 Question Type : MCQ Option Shuffling : Yes Display Question Number : Yes
Single Line Question Option : No Option Orientation : Vertical

Correct Marks : 4 Wrong Marks : 1

The infra-red absorption peaks of Nujol is due to vibrations involving :

Options :

41652946558. $C-H_{str}$ and $C-H_{def}$

41652946559. $N-H_{str}$ and $N-H_{def}$

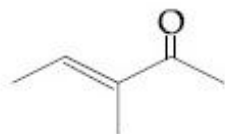
41652946560. $O-H_{str}$ and $O-H_{def}$

41652946561. $S-H_{str}$ and $S-H_{def}$

Question Number : 26 Question Id : 41652911930 Question Type : MCQ Option Shuffling : Yes Display Question Number : Yes
Single Line Question Option : No Option Orientation : Vertical

Correct Marks : 4 Wrong Marks : 1

Predict λ_{max} for a $\pi \rightarrow \pi^*$ absorption band in the UV spectrum of following compound :



Options :

41652946562. 215 nm

41652946563. 237 nm

41652946564. 240 nm

41652946565. 241 nm

Question Number : 27 Question Id : 41652911931 Question Type : MCQ Option Shuffling : Yes Display Question Number : Yes
Single Line Question Option : No Option Orientation : Vertical

Correct Marks : 4 Wrong Marks : 1

When 50 ml of sodium hydroxide (0.1 M) is added to 100 mL of 0.1 M acetic acid, pH of the resultant solution is _____.

K_a of acetic acid = 1.82×10^{-5}

Options :

41652946566. 7.42

41652946567. 7.06

41652946568. 8.58

41652946569. 4.74

**Question Number : 28 Question Id : 41652911932 Question Type : MCQ Option Shuffling : Yes Display Question Number : Yes
Single Line Question Option : No Option Orientation : Vertical
Correct Marks : 4 Wrong Marks : 1**

Von Gierke's glycogen storage disease is due to defect of which enzyme :

Options :

41652946570. Glucosyl 4 - 6 transferase

41652946571. Glucose - 6 - phosphatase

41652946572. Phosphofructokinase

41652946573. Glycogen phosphorylase

**Question Number : 29 Question Id : 41652911933 Question Type : MCQ Option Shuffling : Yes Display Question Number : Yes
Single Line Question Option : No Option Orientation : Vertical
Correct Marks : 4 Wrong Marks : 1**

RNA molecules having intrinsic catalytic activity are called as _____.

Options :

41652946574. mRNAs

41652946575. Ribozymes

41652946576. sn RNAs

41652946577. rRNAs

**Question Number : 30 Question Id : 41652911934 Question Type : MCQ Option Shuffling : Yes Display Question Number : Yes
Single Line Question Option : No Option Orientation : Vertical
Correct Marks : 4 Wrong Marks : 1**

Which of the following inactive clotting factor is activated by the vitamin-K as a co-enzyme ?

Options :

41652946578. II, VII, IX, X

41652946579. I, II, III, IV

41652946580. II, V, VI, VIII

41652946581. II, V, IX, X

Question Number : 31 Question Id : 41652911935 Question Type : MCQ Option Shuffling : Yes Display Question Number : Yes
Single Line Question Option : No Option Orientation : Vertical

Correct Marks : 4 Wrong Marks : 1

Retention hyperbilirubemia is caused due to _____.

Options :

41652946582. Over production of bilirubin

41652946583. Reflux of bilirubin into blood stream

41652946584. Non clearance of bilirubin

41652946585. Choleric jaundice

Question Number : 32 Question Id : 41652911936 Question Type : MCQ Option Shuffling : Yes Display Question Number : Yes
Single Line Question Option : No Option Orientation : Vertical

Correct Marks : 4 Wrong Marks : 1

Blockade in β -oxidation results in :

Options :

41652946586. Scurvy

41652946587. Sudden infant death syndrome

41652946588. Von Gierk's disease

41652946589. Taruli's disease

Question Number : 33 Question Id : 41652911937 Question Type : MCQ Option Shuffling : Yes Display Question Number : Yes
Single Line Question Option : No Option Orientation : Vertical

Correct Marks : 4 Wrong Marks : 1

Identify the molecule which will not exhibit Dipole moment ?

Options :

41652946590. Carbon monoxide

41652946591. Carbon dioxide

41652946592. Chloroform

41652946593. Ammonia

Question Number : 34 Question Id : 41652911938 Question Type : MCQ Option Shuffling : Yes Display Question Number : Yes
Single Line Question Option : No Option Orientation : Vertical

Correct Marks : 4 Wrong Marks : 1

Calculate the accurate osmotic pressure at 0°C of a blood serum sample using Lewis equation having freezing point -0.53°C :

Options :

41652946594. 0.636 atm

41652946595. 6.39 atm

41652946596. 574.28 atm

41652946597. 0.0441 atm

Question Number : 35 Question Id : 41652911939 Question Type : MCQ Option Shuffling : Yes Display Question Number : Yes
Single Line Question Option : No Option Orientation : Vertical

Correct Marks : 4 Wrong Marks : 1

What will be the Heat of vaporisation of 1 mole of water, when it has the entropy change (ΔS) of $35.2 \text{ cal/mole}\cdot\text{deg}$ (at 25°C) ?

Options :

41652946598. 1.408 cal/mole

41652946599. 10489 cal/mole

41652946600. 8465 cal/mole

41652946601. 880 cal/mole

Question Number : 36 Question Id : 41652911940 Question Type : MCQ Option Shuffling : Yes Display Question Number : Yes
Single Line Question Option : No Option Orientation : Vertical

Correct Marks : 4 Wrong Marks : 1

Phase solubility Analysis curve is not a good tool for :

Options :

41652946602. Impurity detection

41652946603. Polymorph detection

41652946604. Complex formation

Bioavailability determination

41652946605.

Question Number : 37 Question Id : 41652911941 Question Type : MCQ Option Shuffling : Yes Display Question Number : Yes
Single Line Question Option : No Option Orientation : Vertical

Correct Marks : 4 Wrong Marks : 1

Kinetically $\frac{x}{a(a-x)} = kt$ is the expression for :

Options :

41652946606. first order reaction

41652946607. pseudo first order reaction

41652946608. second order reaction

41652946609. fractional order reaction

Question Number : 38 Question Id : 41652911942 Question Type : MCQ Option Shuffling : Yes Display Question Number : Yes
Single Line Question Option : No Option Orientation : Vertical

Correct Marks : 4 Wrong Marks : 1

Select the correct order of ortho/para directing ability of the functional groups from those given below :

(Strongest first, Weakest last)

Options :

41652946610. $-\text{NHCOR} > -\text{OH} > -\text{C}_6\text{H}_5 > \text{I}$

41652946611. $-\text{NHCOR} > -\text{NH}_2 > -\text{C}_6\text{H}_5 > \text{I}$

41652946612. $-\text{NHCOR} > -\text{NR}_2 > -\text{C}_6\text{H}_5 > \text{I}$

41652946613. $-\text{NHR} > -\text{NHCOR} > -\text{C}_6\text{H}_5 > \text{I}$

Question Number : 39 Question Id : 41652911943 Question Type : MCQ Option Shuffling : Yes Display Question Number : Yes
Single Line Question Option : No Option Orientation : Vertical

Correct Marks : 4 Wrong Marks : 1

Conversion of aryldiazonium chloride to arylchloride can be achieved in the presence of :

Options :

41652946614. Copper (I) chloride

41652946615. Copper (II) chloride

41652946616. Sodium chloride

41652946617. Calcium chloride

Question Number : 40 Question Id : 41652911944 Question Type : MCQ Option Shuffling : Yes Display Question Number : Yes
Single Line Question Option : No Option Orientation : Vertical

Correct Marks : 4 Wrong Marks : 1

Dehydration of this dicarboxylic acid to obtain corresponding anhydride is difficult due to stereochemical arrangement :

Options :

41652946618. Succinic acid

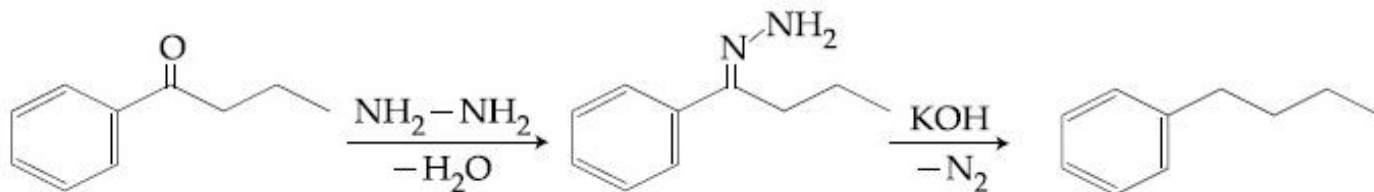
41652946619. Malic acid

41652946620. Fumaric acid

41652946621. Glutaric acid

Question Number : 41 Question Id : 41652911945 Question Type : MCQ Option Shuffling : Yes Display Question Number : Yes
Single Line Question Option : No Option Orientation : Vertical

Correct Marks : 4 Wrong Marks : 1



Identify the named reaction;

Options :

41652946622. Clemmensen reduction

41652946623. Wolf-Kishner reduction

41652946624. Curtius Rearrangement

41652946625. Wolf-Rearrangement

Question Number : 42 Question Id : 41652911946 Question Type : MCQ Option Shuffling : Yes Display Question Number : Yes
Single Line Question Option : No Option Orientation : Vertical

Correct Marks : 4 Wrong Marks : 1

One of the following is a most commonly used protecting group for amines :

Options :

41652946626. t-Butyloxy carbonyl (t-BOC)

41652946627. Tetra hydro pyranyl oxy (THP)

41652946628. Methoxy methylene (MOM)

41652946629. Para Methyl benzyl (PMB)

Question Number : 43 Question Id : 41652911947 Question Type : MCQ Option Shuffling : Yes Display Question Number : Yes
Single Line Question Option : No Option Orientation : Vertical

Correct Marks : 4 Wrong Marks : 1

Conversion of a carbonyl functionality directly to its hydrocarbon in basic media can be achieved by :

Options :

41652946630. Sodium borohydride reduction

41652946631. Lithium aluminium hydride reduction

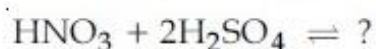
41652946632. Clemmensen reduction

41652946633. Wolf Kishner reduction

Question Number : 44 Question Id : 41652911948 Question Type : MCQ Option Shuffling : Yes Display Question Number : Yes
Single Line Question Option : No Option Orientation : Vertical

Correct Marks : 4 Wrong Marks : 1

Choose the correct product of the following reaction :



Options :

41652946634. $\text{H}_2\text{O} + 2\text{HSO}_4^- + \text{NO}_2^+$

41652946635. $\text{H}_3\text{O}^+ + 2\text{HSO}_4^- + \text{NO}_2^+$

41652946636. $\text{OH}^- + 2\text{HSO}_4^- + \text{NO}_2^-$

41652946637. $\text{H}_3\text{O}^+ + 2\text{HSO}_4^+ + \text{NO}_2^+$

Question Number : 45 Question Id : 41652911949 Question Type : MCQ Option Shuffling : Yes Display Question Number : Yes
Single Line Question Option : No Option Orientation : Vertical

Correct Marks : 4 Wrong Marks : 1

Gabriel ring closure method is employed for the synthesis of :

Options :

41652946638. Aziridine

41652946639. Oxirane

41652946640. Oxaziridine

41652946641. 1, 4-oxazine

Question Number : 46 Question Id : 41652911950 Question Type : MCQ Option Shuffling : Yes Display Question Number : Yes
Single Line Question Option : No Option Orientation : Vertical

Correct Marks : 4 Wrong Marks : 1

Anti addition of bromine to trans-2-butene yields :

Options :

41652946642. Only enantiomers

41652946643. Only racemic mixture

41652946644. Enantiomer and racemic mixture

41652946645. Only meso compounds

Question Number : 47 Question Id : 41652911951 Question Type : MCQ Option Shuffling : Yes Display Question Number : Yes
Single Line Question Option : No Option Orientation : Vertical

Correct Marks : 4 Wrong Marks : 1

Reaction of an α -halo ester with an aldehyde or ketone in the presence of a base like NaNH_2 gives α, β -epoxy carboxylic ester. This reaction is referred as :

Options :

41652946646. Bamford steven reaction

41652946647. Bayer villiger rearrangement

41652946648. Darzen's glycidic synthesis

41652946649. Willgerodt rearrangement



Question Number : 48 Question Id : 41652911952 Question Type : MCQ Option Shuffling : Yes Display Question Number : Yes
Single Line Question Option : No Option Orientation : Vertical

Correct Marks : 4 Wrong Marks : 1

The chief product obtained by the reaction of neo-pentyl bromide under E₁ reaction conditions :

Options :

41652946650. neo pentyl alcohol
41652946651. 2-methyl-2-butene
41652946652. 2-methyl butene
41652946653. 2-methyl-1,3-butadiene

Question Number : 49 Question Id : 41652911953 Question Type : MCQ Option Shuffling : Yes Display Question Number : Yes
Single Line Question Option : No Option Orientation : Vertical

Correct Marks : 4 Wrong Marks : 1

Oxazole is prepared by the condensation of α -amino carbonyl compound with :

Options :

41652946654. Iminoester
41652946655. Aminoether
41652946656. Amino acid
41652946657. Isocyanide

Pharmaceutics

Section Id :	416529221
Section Number :	3
Section type :	Online
Mandatory or Optional:	Mandatory
Number of Questions:	38
Number of Questions to be attempted:	38
Section Marks:	152
Display Number Panel:	Yes
Group All Questions:	No

Sub-Section Number:	1
Sub-Section Id:	416529345
Question Shuffling Allowed :	Yes

Question Number : 50 Question Id : 41652911954 Question Type : MCQ Option Shuffling : Yes Display Question Number : Yes
Single Line Question Option : No Option Orientation : Vertical

Correct Marks : 4 Wrong Marks : 1

Microcrystalline cellulose is also called as :

Options :

- 41652946658. Sugar tab
- 41652946659. Nutab
- 41652946660. Emdex
- 41652946661. Avicel

Question Number : 51 Question Id : 41652911955 Question Type : MCQ Option Shuffling : Yes Display Question Number : Yes Single Line Question Option : No Option Orientation : Vertical

Correct Marks : 4 Wrong Marks : 1

“Shake well” label must be placed on the containers of :

Options :

- 41652946662. Ophthalmic solution
- 41652946663. Ophthalmic gels
- 41652946664. Ophthalmic suspension
- 41652946665. Occuserts

Question Number : 52 Question Id : 41652911956 Question Type : MCQ Option Shuffling : Yes Display Question Number : Yes Single Line Question Option : No Option Orientation : Vertical

Correct Marks : 4 Wrong Marks : 1

Which one of the following is the property of micro-emulsion ?

Options :

- 41652946666. They have particle size more than 1 micron.
- 41652946667. They have milky yellow colour
- 41652946668. They exhibit a viscoelastic gel phase, when internal phase is added in excess.
- 41652946669. They have poor stability.

Question Number : 53 Question Id : 41652911957 Question Type : MCQ Option Shuffling : Yes Display Question Number : Yes Single Line Question Option : No Option Orientation : Vertical

Correct Marks : 4 Wrong Marks : 1

In tablet, hydroxy propyl methyl cellulose is used as :

Options :

41652946670. Disintegrant

41652946671. Binder

41652946672. Diluent

41652946673. Film former

**Question Number : 54 Question Id : 41652911958 Question Type : MCQ Option Shuffling : Yes Display Question Number : Yes
Single Line Question Option : No Option Orientation : Vertical**

Correct Marks : 4 Wrong Marks : 1

In case of suppositories base, SFI stands for :

Options :

41652946674. Solid Fluid Indices

41652946675. Solid Fat Index

41652946676. Solidified Fatty acid Incline

41652946677. Solidified Fatty acid Indices

**Question Number : 55 Question Id : 41652911959 Question Type : MCQ Option Shuffling : Yes Display Question Number : Yes
Single Line Question Option : No Option Orientation : Vertical**

Correct Marks : 4 Wrong Marks : 1

21 CFR part 211 of USFDA describes :

Options :

41652946678. Current good manufacturing practice

41652946679. Current good clinical practice

41652946680. Current good laboratory practice

41652946681. Current good packaging practice

**Question Number : 56 Question Id : 41652911960 Question Type : MCQ Option Shuffling : Yes Display Question Number : Yes
Single Line Question Option : No Option Orientation : Vertical**

Correct Marks : 4 Wrong Marks : 1

Which polymorphic form of a drug candidate has highest melting point :

Options :

41652946682. Stable

41652946683. Metastable

41652946684. Unstable

41652946685. Hydrates

**Question Number : 57 Question Id : 41652911961 Question Type : MCQ Option Shuffling : Yes Display Question Number : Yes
Single Line Question Option : No Option Orientation : Vertical
Correct Marks : 4 Wrong Marks : 1**

Leaching by immersion of crude material in a solvent is also known as :

Options :

41652946686. Evaporation

41652946687. Maceration

41652946688. Precipitation

41652946689. Crystallization

**Question Number : 58 Question Id : 41652911962 Question Type : MCQ Option Shuffling : Yes Display Question Number : Yes
Single Line Question Option : No Option Orientation : Vertical
Correct Marks : 4 Wrong Marks : 1**

In preformulation study polymorphs can be detected by :

Options :

41652946690. Retractometry

41652946691. High performance liquid chromatography

41652946692. Differential scanning calorimetry

41652946693. Counter - current chromatography

**Question Number : 59 Question Id : 41652911963 Question Type : MCQ Option Shuffling : Yes Display Question Number : Yes
Single Line Question Option : No Option Orientation : Vertical
Correct Marks : 4 Wrong Marks : 1**

MEDLINE, EMBASE, EBM AND IDIs are :

Options :

41652946694. Source for drug patents

41652946695. Drug databases

41652946696. Chronicles of drug standards

41652946697. New compendial specification of drugs

Question Number : 60 Question Id : 41652911964 Question Type : MCQ Option Shuffling : Yes Display Question Number : Yes
Single Line Question Option : No Option Orientation : Vertical

Correct Marks : 4 Wrong Marks : 1

Soda ash is also known as :

Options :

41652946698. Lime stone

41652946699. Sodium carbonate

41652946700. Pure silica

41652946701. Calcium carbonate

Question Number : 61 Question Id : 41652911965 Question Type : MCQ Option Shuffling : Yes Display Question Number : Yes
Single Line Question Option : No Option Orientation : Vertical

Correct Marks : 4 Wrong Marks : 1

Which of the following is NOT a mechanism for achieving gastroretention ?

Options :

41652946702. Mucoadhesion

41652946703. Floating

41652946704. Swelling

41652946705. Osmosis

Question Number : 62 Question Id : 41652911966 Question Type : MCQ Option Shuffling : Yes Display Question Number : Yes
Single Line Question Option : No Option Orientation : Vertical

Correct Marks : 4 Wrong Marks : 1

Containers may be rendered free from pyrogens by adequate cleaning and by :

Options :

41652946706. Autoclaving at 121°C for 15 minutes.

41652946707. Autoclaving at 121°C for 1 hour

41652946708. Heating at 100°C for 3-4 hours

Heating at 210°C for 3-4 hours

41652946709.

Question Number : 63 Question Id : 41652911967 Question Type : MCQ Option Shuffling : Yes Display Question Number : Yes
Single Line Question Option : No Option Orientation : Vertical

Correct Marks : 4 Wrong Marks : 1

In case of Aerosol testing, valve delivering acceptance criteria for a volume of 54 μ L or less is :

Options :

41652946710. $\pm 15\%$

41652946711. $\pm 10\%$

41652946712. $\pm 5\%$

41652946713. $\pm 75\%$

Question Number : 64 Question Id : 41652911968 Question Type : MCQ Option Shuffling : Yes Display Question Number : Yes
Single Line Question Option : No Option Orientation : Vertical

Correct Marks : 4 Wrong Marks : 1

Which of the following oxide is not used for achieving Amber color to glass ?

Options :

41652946714. Iron

41652946715. Manganese

41652946716. Carbon

41652946717. Cobalt

Question Number : 65 Question Id : 41652911969 Question Type : MCQ Option Shuffling : Yes Display Question Number : Yes
Single Line Question Option : No Option Orientation : Vertical

Correct Marks : 4 Wrong Marks : 1

GMP regulation are pertaining to minimum requirements to be met by industry when :

Options :

41652946718. Manufacture of human drugs and veterinary drugs.

41652946719. Manufacture and packaging of human drugs and veterinary drugs.

41652946720. Manufacture and holding of human drugs and veterinary drugs

41652946721. Manufacturing, packaging and holding of human drugs and veterinary drugs.

Question Number : 66 Question Id : 41652911970 Question Type : MCQ Option Shuffling : Yes Display Question Number : Yes
Single Line Question Option : No Option Orientation : Vertical

Correct Marks : 4 Wrong Marks : 1

For drug substances with highly variable pharmacokinetic characteristics the following Bioequivalence study design is used :

Options :

41652946722. Parallel Design

41652946723. Replicate Design

41652946724. Non-Replicate Design

41652946725. Non-Parallel Design

Question Number : 67 Question Id : 41652911971 Question Type : MCQ Option Shuffling : Yes Display Question Number : Yes
Single Line Question Option : No Option Orientation : Vertical

Correct Marks : 4 Wrong Marks : 1

When two brands of a drug product gives same clinical results, it is termed as :

Options :

41652946726. Clinical equivalence

41652946727. Bio equivalence

41652946728. Therapeutic equivalence

41652946729. Pharmaceutical equivalence

Question Number : 68 Question Id : 41652911972 Question Type : MCQ Option Shuffling : Yes Display Question Number : Yes
Single Line Question Option : No Option Orientation : Vertical

Correct Marks : 4 Wrong Marks : 1

Volume of blood that flows per unit time per unit volume of the tissue is :

Options :

41652946730. Gastric emptying rate

41652946731. Elimination rate

41652946732. Residence time

41652946733. Perfusion rate

Question Number : 69 Question Id : 41652911973 Question Type : MCQ Option Shuffling : Yes Display Question Number : Yes
Single Line Question Option : No Option Orientation : Vertical

Correct Marks : 4 Wrong Marks : 1

The co-administration of erythromycin with cyclosporine :

Options :

41652946734. Decrease bioavailability, due to induction of hepatic metabolism

41652946735. Increase bioavailability, due to inhibition of microflora in intestine

41652946736. Increase bioavailability, due to inhibition of hepatic metabolism

41652946737. Decrease bioavailability due to complex formation

Question Number : 70 Question Id : 41652911974 Question Type : MCQ Option Shuffling : Yes Display Question Number : Yes
Single Line Question Option : No Option Orientation : Vertical

Correct Marks : 4 Wrong Marks : 1

In case of one-compartment open model intravenous infusion, C_{ss} (steady state plasma concentration) is equal to :

Options :

41652946738. $\frac{\text{Infusion rate}}{\text{Clearance}}$

41652946739. $\frac{[t_{\max}][\text{Infusion rate}]}{\text{Clearance}}$

41652946740. $\frac{[\text{Plasma concentration}][\text{Infusion rate}]}{\text{Clearance}}$

41652946741. $\frac{[C_{\max}][\text{Infusion rate}]}{\text{Clearance}}$

Question Number : 71 Question Id : 41652911975 Question Type : MCQ Option Shuffling : Yes Display Question Number : Yes
Single Line Question Option : No Option Orientation : Vertical

Correct Marks : 4 Wrong Marks : 1

Which mechanism of metabolism of drug is not affected by weight change of patient ?

Options :

41652946742. Oxidative metabolism

41652946743. Conjugative metabolism

41652946744. Hydrolytic metabolism

41652946745. Acetylation metabolism

**Question Number : 72 Question Id : 41652911976 Question Type : MCQ Option Shuffling : Yes Display Question Number : Yes
Single Line Question Option : No Option Orientation : Vertical**

Correct Marks : 4 Wrong Marks : 1

As per US FDA, NDA's for new chemical entitles are classified as either :

Options :

41652946746. 'P' for priority review or 'S' for safety review.

41652946747. 'P' for priority review or 'S' for standard review

41652946748. 'P' for product review or 'S' for safety review

41652946749. 'P' for product review or 'S' for standard review

**Question Number : 73 Question Id : 41652911977 Question Type : MCQ Option Shuffling : Yes Display Question Number : Yes
Single Line Question Option : No Option Orientation : Vertical**

Correct Marks : 4 Wrong Marks : 1

Movement of a charged particle through a liquid under the influence of an applied potential difference is known as :

Options :

41652946750. Electroosmosis

41652946751. Sedimentation Potential

41652946752. Streaming Potential

41652946753. Electrophoresis

**Question Number : 74 Question Id : 41652911978 Question Type : MCQ Option Shuffling : Yes Display Question Number : Yes
Single Line Question Option : No Option Orientation : Vertical**

Correct Marks : 4 Wrong Marks : 1

The rheological and functional properties of synovial fluid are impaired due to :

Options :

41652946754. Increase in the content of hyaluronic acid

41652946755. Decrease in the content of hyaluronic acid

41652946756. Increase in the content of mucus

41652946757. Decrease in the content of mucus

Question Number : 75 Question Id : 41652911979 Question Type : MCQ Option Shuffling : Yes Display Question Number : Yes Single Line Question Option : No Option Orientation : Vertical

Correct Marks : 4 Wrong Marks : 1

Which one of the following viscometers can be used for characterizing non-Newtonian system ?

Options :

41652946758. Capillary viscometer

41652946759. Falling sphere viscometer

41652946760. Cup and Bob viscometer

41652946761. Hoeppler viscometer

Question Number : 76 Question Id : 41652911980 Question Type : MCQ Option Shuffling : Yes Display Question Number : Yes Single Line Question Option : No Option Orientation : Vertical

Correct Marks : 4 Wrong Marks : 1

Theories of emulsification are characterized by one of the following EXCEPT :

Options :

41652946762. Monomolecular adsorption

41652946763. Film formation

41652946764. Phase inversion

41652946765. Solid particle adsorption

Question Number : 77 Question Id : 41652911981 Question Type : MCQ Option Shuffling : Yes Display Question Number : Yes Single Line Question Option : No Option Orientation : Vertical

Correct Marks : 4 Wrong Marks : 1

The following technique/s is/are used to determine the amount of drug bound to a protein :

Options :

41652946766. Equilibrium dialysis

41652946767. pH titration

41652946768. Solubility

41652946769. Distribution method

Question Number : 78 Question Id : 41652911982 Question Type : MCQ Option Shuffling : Yes Display Question Number : Yes
Single Line Question Option : No Option Orientation : Vertical

Correct Marks : 4 Wrong Marks : 1

Which of the following statement is NOT true regarding bulkiness ?

Options :

41652946770. The reciprocal of bulk density is bulkiness

41652946771. Bulkiest substance will require container larger than required for less bulky substance

41652946772. Bulkiness increases with decrease in particle size

41652946773. Smaller particles shift between larger ones and increases bulkiness

Question Number : 79 Question Id : 41652911983 Question Type : MCQ Option Shuffling : Yes Display Question Number : Yes
Single Line Question Option : No Option Orientation : Vertical

Correct Marks : 4 Wrong Marks : 1

If mean volume – number diameter of a powdered sample is $2.41 \mu\text{m}$, density is 3 gm/cm^3 ,
the number of particles/gm will be :

Options :

41652946774. 4.55×10^{10}

41652946775. 5.38×10^{10}

41652946776. 4.70×10^{10}

41652946777. 3.68×10^{10}

Question Number : 80 Question Id : 41652911984 Question Type : MCQ Option Shuffling : Yes Display Question Number : Yes
Single Line Question Option : No Option Orientation : Vertical

Correct Marks : 4 Wrong Marks : 1

For bitter drugs in paediatric formulations, excellent flavouring agent will be :

Options :

41652946778. Orange syrup

41652946779. Lemon syrup

41652946780. Raspberry syrup

41652946781. Black current syrup

Question Number : 81 Question Id : 41652911985 Question Type : MCQ Option Shuffling : Yes Display Question Number : Yes
Single Line Question Option : No Option Orientation : Vertical

Correct Marks : 4 Wrong Marks : 1

A mixture of emulsifier A and emulsifier B with H.L.B. values of 4 and 14 respectively are to be mixed in a proportion to get a mixture with required HLB 12. What is the weight of individual emulsifier that is to be taken to have a total weight of 7 gm ?

Options :

41652946782. A = 1.4 gm and B = 5.6 gm

41652946783. A = 5.6 gm and B = 1.4 gm

41652946784. A = 1.2 gm and B = 5.8 gm

41652946785. A = 5.8 gm and B = 1.2 gm

Question Number : 82 Question Id : 41652911986 Question Type : MCQ Option Shuffling : Yes Display Question Number : Yes
Single Line Question Option : No Option Orientation : Vertical

Correct Marks : 4 Wrong Marks : 1

Essentially Hospital Formulary system provide mechanism to :

Options :

41652946786. Avoid brand and therapeutic duplication

41652946787. Streamline prescription writing

41652946788. Improve surgical procedures

41652946789. Improve quality and hygenicity of food

Question Number : 83 Question Id : 41652911987 Question Type : MCQ Option Shuffling : Yes Display Question Number : Yes
Single Line Question Option : No Option Orientation : Vertical

Correct Marks : 4 Wrong Marks : 1

Dakin's solution is a synonym for :

Options :

41652946790. Chloroxylenlol solution

41652946791. Aluminium Acetate solution

41652946792. Chlorinated soda solution

41652946793. Ammonium Acetate solution

**Question Number : 84 Question Id : 41652911988 Question Type : MCQ Option Shuffling : Yes Display Question Number : Yes
Single Line Question Option : No Option Orientation : Vertical**

Correct Marks : 4 Wrong Marks : 1

The protein toxins that have been modified to reduce the toxicity without significantly altering the immunogenicity are known as :

Options :

41652946794. Toxoids

41652946795. Vaccines

41652946796. Antisera

41652946797. Sera

**Question Number : 85 Question Id : 41652911989 Question Type : MCQ Option Shuffling : Yes Display Question Number : Yes
Single Line Question Option : No Option Orientation : Vertical**

Correct Marks : 4 Wrong Marks : 1

Roll-tube technique is the modification of :

Options :

41652946798. The streak - plate technique

41652946799. Pour plate technique

41652946800. Spread plate technique

41652946801. Micromanipulator technique

**Question Number : 86 Question Id : 41652911990 Question Type : MCQ Option Shuffling : Yes Display Question Number : Yes
Single Line Question Option : No Option Orientation : Vertical**

Correct Marks : 4 Wrong Marks : 1

The phase contrast microscopy is valuable in studying living cells which are :

Options :

41652946802. Unstained

41652946803. Stained

41652946804. Treated with fluorescent dye

41652946805. Treated with fluorescent antibody

Question Number : 87 Question Id : 41652911991 Question Type : MCQ Option Shuffling : Yes Display Question Number : Yes
Single Line Question Option : No Option Orientation : Vertical

Correct Marks : 4 Wrong Marks : 1

In treating immunodeficiency disease the goal is to maintain IgG levels at about :

Options :

41652946806. 100 mg/ dL

41652946807. 200 mg/ dL

41652946808. 300 mg/ dL

41652946809. 400 mg/ dL

Pharmacognosy

Section Id :	416529222
Section Number :	4
Section type :	Online
Mandatory or Optional:	Mandatory
Number of Questions:	10
Number of Questions to be attempted:	10
Section Marks:	40
Display Number Panel:	Yes
Group All Questions:	No

Sub-Section Number:	1
Sub-Section Id:	416529346
Question Shuffling Allowed :	Yes

Question Number : 88 Question Id : 41652911992 Question Type : MCQ Option Shuffling : Yes Display Question Number : Yes
Single Line Question Option : No Option Orientation : Vertical

Correct Marks : 4 Wrong Marks : 1

In *Cassia angustifolia* short-term drought :

Options :

41652946810. causes death of the plant

41652946811. causes loss of leaf biomass

41652946812. increases the concentration of sennosides A + B

41652946813. decreases the concentration of sennosides A + B

Question Number : 89 Question Id : 41652911993 Question Type : MCQ Option Shuffling : Yes Display Question Number : Yes
Single Line Question Option : No Option Orientation : Vertical

Correct Marks : 4 Wrong Marks : 1

Antiviral action of Neem is due to :

Options :

41652946814. Nimbin

41652946815. Nelanin

41652946816. Azadirachtin

41652946817. Kaemferol

Question Number : 90 Question Id : 41652911994 Question Type : MCQ Option Shuffling : Yes Display Question Number : Yes
Single Line Question Option : No Option Orientation : Vertical

Correct Marks : 4 Wrong Marks : 1

**All members of this order are trees or shrubs; mostly evergreen with needle - like leaves ;
monoecious or dioecious - sporophylls usually in cones. Resin ducts occur in all parts :**

Options :

41652946818. Taxales

41652946819. Cycadales

41652946820. Ginkgoales

41652946821. Coniferae

Question Number : 91 Question Id : 41652911995 Question Type : MCQ Option Shuffling : Yes Display Question Number : Yes
Single Line Question Option : No Option Orientation : Vertical

Correct Marks : 4 Wrong Marks : 1

**Shellac is a resinous substance prepared from a secretion that encrusts the bodies of a scale
insect :**

Options :

41652946822. Acipenser huso

41652946823. Karria lacca

41652946824. Alverites moschiferus

41652946825. Viverra civet



Question Number : 92 Question Id : 41652911996 Question Type : MCQ Option Shuffling : Yes Display Question Number : Yes
Single Line Question Option : No Option Orientation : Vertical

Correct Marks : 4 Wrong Marks : 1

The principal cultivation areas of pyrethrum flowers are in -

Options :

41652946826. Sri Lanka

41652946827. India

41652946828. Malaysia

41652946829. Kenya

Question Number : 93 Question Id : 41652911997 Question Type : MCQ Option Shuffling : Yes Display Question Number : Yes
Single Line Question Option : No Option Orientation : Vertical

Correct Marks : 4 Wrong Marks : 1

The size of Lycopodium spores is :

Options :

41652946830. 15 μm

41652946831. 25 μm

41652946832. 35 μm

41652946833. 45 μm

Question Number : 94 Question Id : 41652911998 Question Type : MCQ Option Shuffling : Yes Display Question Number : Yes
Single Line Question Option : No Option Orientation : Vertical

Correct Marks : 4 Wrong Marks : 1

In Gambir - fluorescin test the petroleum spirit layer shows a strong :

Options :

41652946834. yellow fluorescence

41652946835. red fluorescence

41652946836. blue fluorescence

41652946837. green fluorescence

Question Number : 95 Question Id : 41652911999 Question Type : MCQ Option Shuffling : Yes Display Question Number : Yes
Single Line Question Option : No Option Orientation : Vertical

Correct Marks : 4 Wrong Marks : 1

Pungency of Zingiber officinale rhizome is due to the presence of :

Options :

41652946838. Gingeral

41652946839. Citral

41652946840. Gingerol

41652946841. Commiphoric acid

Question Number : 96 Question Id : 41652912000 Question Type : MCQ Option Shuffling : Yes Display Question Number : Yes Single Line Question Option : No Option Orientation : Vertical

Correct Marks : 4 Wrong Marks : 1

Regholarrhenines A-F have been isolated from :

Options :

41652946842. Veratrums

41652946843. Kurchi

41652946844. Aconite

41652946845. Areca

Question Number : 97 Question Id : 41652912001 Question Type : MCQ Option Shuffling : Yes Display Question Number : Yes Single Line Question Option : No Option Orientation : Vertical

Correct Marks : 4 Wrong Marks : 1

The Glycoside Scilliroside in red squill acts as :

Options :

41652946846. Insecticide

41652946847. Molluscide

41652946848. Acaricide

41652946849. Rodenticide

Pharmacology

Section Id :	416529223
Section Number :	5
Section type :	Online
Mandatory or Optional:	Mandatory
Number of Questions:	28
Number of Questions to be attempted:	28
Section Marks:	112
Display Number Panel:	Yes
Group All Questions:	No

Sub-Section Number: 1
Sub-Section Id: 416529347
Question Shuffling Allowed : Yes

Question Number : 98 Question Id : 41652912002 Question Type : MCQ Option Shuffling : Yes Display Question Number : Yes
Single Line Question Option : No Option Orientation : Vertical

Correct Marks : 4 Wrong Marks : 1

Glucocorticoids have following effects - EXCEPT :

Options :

41652946850. Protein breakdown and glucose formation

41652946851. Lipolysis

41652946852. Resistance to stress

41652946853. Stimulation of immune responses

Question Number : 99 Question Id : 41652912003 Question Type : MCQ Option Shuffling : Yes Display Question Number : Yes
Single Line Question Option : No Option Orientation : Vertical

Correct Marks : 4 Wrong Marks : 1

Several different chemicals released by microbes and inflamed tissues attract phagocytes, this phenomenon is called as _____.

Options :

41652946854. Phagocytosis

41652946855. Chemotaxis

41652946856. Emigration

41652946857. Integrins

Question Number : 100 Question Id : 41652912004 Question Type : MCQ Option Shuffling : Yes Display Question Number : Yes
Single Line Question Option : No Option Orientation : Vertical

Correct Marks : 4 Wrong Marks : 1

What are sutures ?

Options :

41652946858. Fibrous joints of the skull

41652946859. Cartilaginous joints

41652946860. Synovial joints

41652946861. Non fibrous joints

Question Number : 101 Question Id : 41652912005 Question Type : MCQ Option Shuffling : Yes Display Question Number : Yes
Single Line Question Option : No Option Orientation : Vertical

Correct Marks : 4 Wrong Marks : 1

Cardiac output is :

Options :

41652946862. Volume of blood ejected by the auricles per beat

41652946863. Volume of the blood ejected by the left ventricle per beat

41652946864. Volume of blood ejected by the auricle per minute

41652946865. Volume of the blood ejected by the left ventricle per minute

Question Number : 102 Question Id : 41652912006 Question Type : MCQ Option Shuffling : Yes Display Question Number : Yes
Single Line Question Option : No Option Orientation : Vertical

Correct Marks : 4 Wrong Marks : 1

Hematocrit 65% to 70% indicates :

Options :

41652946866. Anaemia

41652946867. Polycythemia

41652946868. Hypoxia

41652946869. Hemophilia

Question Number : 103 Question Id : 41652912007 Question Type : MCQ Option Shuffling : Yes Display Question Number : Yes
Single Line Question Option : No Option Orientation : Vertical

Correct Marks : 4 Wrong Marks : 1

The adverse reaction associated with β -2 agonists administered by inhalation or nebulisation in the management of asthma does not include _____.

Options :

41652946870. Hypertension

41652946871. Fine tremor

41652946872. Peripheral vasodilation

41652946873. Tachycardia

Question Number : 104 Question Id : 41652912008 Question Type : MCQ Option Shuffling : Yes Display Question Number : Yes
Single Line Question Option : No Option Orientation : Vertical

Correct Marks : 4 Wrong Marks : 1

The antiemetic activity of glycopyrronium is related to potent inhibition of _____ receptor both peripherally and centrally.

Options :

41652946874. H₁

41652946875. M₁

41652946876. D₂

41652946877. 5HT₃

Question Number : 105 Question Id : 41652912009 Question Type : MCQ Option Shuffling : Yes Display Question Number : Yes
Single Line Question Option : No Option Orientation : Vertical

Correct Marks : 4 Wrong Marks : 1

Production of an abnormal IgG immunoglobulin in Grave's disease causes :

Options :

41652946878. Thyrotoxicosis

41652946879. Rheumatoid arthritis

41652946880. Hypothyroidism

41652946881. Multinodular goitre

Question Number : 106 Question Id : 41652912010 Question Type : MCQ Option Shuffling : Yes Display Question Number : Yes
Single Line Question Option : No Option Orientation : Vertical

Correct Marks : 4 Wrong Marks : 1

Match the following liver abnormalities with consequences :

- | | |
|-----------------|---|
| (a) Steatosis | (M) Raised bilirubin level |
| (b) Cholestasis | (N) Slight rise in serum transaminase level |
| (c) Hepatitis | (O) Accumulation of fat droplets within liver cells |
| (d) Fibrosis | (P) Elevated liver function test (LFT's) |

Options :

41652946882. (a) - (P)
(b) - (O)
(c) - (N)
(d) - (M)

41652946883. (a) - (N)
(b) - (P)
(c) - (M)
(d) - (O)

- (a) - (N)
- (b) - (O)
- (c) - (P)
- (d) - (M)

41652946884.

- (a) - (O)
- (b) - (M)
- (c) - (P)
- (d) - (N)

41652946885.

Question Number : 107 Question Id : 41652912011 Question Type : MCQ Option Shuffling : Yes Display Question Number : Yes Single Line Question Option : No Option Orientation : Vertical

Correct Marks : 4 Wrong Marks : 1

Disturbances of oestrogen/progesterone balance could cause a relative deficiency of _____ leading to disturbances in production of dopamine and serotonin. This contributes for emotional disturbances and depression.

Options :

41652946886. Tyrosine

41652946887. Co-factor A

41652946888. Pyridoxine phosphate

41652946889. Enzyme decarboxylase

Question Number : 108 Question Id : 41652912012 Question Type : MCQ Option Shuffling : Yes Display Question Number : Yes Single Line Question Option : No Option Orientation : Vertical

Correct Marks : 4 Wrong Marks : 1

Which of the following is 5-alpha reductase inhibitor ?

Options :

41652946890. Finasteride

41652946891. Polythiazide

41652946892. Gliclazide

41652946893. Sildenafil

Question Number : 109 Question Id : 41652912013 Question Type : MCQ Option Shuffling : Yes Display Question Number : Yes Single Line Question Option : No Option Orientation : Vertical

Correct Marks : 4 Wrong Marks : 1

Identify the false statement about benzodiazepines from the following :

Options :

41652946894. Benzodiazepines cause reduction of anxiety

41652946895. Benzodiazepines are useful in insomnia

41652946896. Benzodiazepines cause convulsions

41652946897. Benzodiazepines produce muscle relaxation and loss of motor co-ordination

Question Number : 110 Question Id : 41652912014 Question Type : MCQ Option Shuffling : Yes Display Question Number : Yes
Single Line Question Option : No Option Orientation : Vertical

Correct Marks : 4 Wrong Marks : 1

Identify the drug which is not useful in the treatment of tuberculosis :

Options :

41652946898. Ciprofloxacin

41652946899. Streptomycin

41652946900. Gentamicin

41652946901. Pyrazinamide

Question Number : 111 Question Id : 41652912015 Question Type : MCQ Option Shuffling : Yes Display Question Number : Yes
Single Line Question Option : No Option Orientation : Vertical

Correct Marks : 4 Wrong Marks : 1

Which of the following is NOT a cardioselective β blocker ?

Options :

41652946902. Bisoprolol

41652946903. Acebutolol

41652946904. Pindolol

41652946905. Nebivolol

Question Number : 112 Question Id : 41652912016 Question Type : MCQ Option Shuffling : Yes Display Question Number : Yes
Single Line Question Option : No Option Orientation : Vertical

Correct Marks : 4 Wrong Marks : 1

Select the ulcer protective drug from the following :

Options :

41652946906. Sucralfate

41652946907. Metronidazole

41652946908. Misoprostol

41652946909. Oxyphenonium

Question Number : 113 Question Id : 41652912017 Question Type : MCQ Option Shuffling : Yes Display Question Number : Yes
Single Line Question Option : No Option Orientation : Vertical

Correct Marks : 4 Wrong Marks : 1

Testing of chemicals by OECD guideline No. 420 refers to which of the following :

Options :

41652946910. Acute oral toxicity by acute toxic class method

41652946911. Acute oral toxicity by fixed dose procedure

41652946912. Acute oral toxicity by up and Down procedure

41652946913. Repeated dose 28-day toxicity study in rodents

Question Number : 114 Question Id : 41652912018 Question Type : MCQ Option Shuffling : Yes Display Question Number : Yes
Single Line Question Option : No Option Orientation : Vertical

Correct Marks : 4 Wrong Marks : 1

Numerous isomers of human liver P450 enzymes have been identified. It is not worthy that _____ alone is responsible for the metabolism of over 50% of the prescription drugs metabolized by liver.

Options :

41652946914. CYP1A2

41652946915. CYP2B6

41652946916. CYP3A4

41652946917. CYP1A11

Question Number : 115 Question Id : 41652912019 Question Type : MCQ Option Shuffling : Yes Display Question Number : Yes
Single Line Question Option : No Option Orientation : Vertical

Correct Marks : 4 Wrong Marks : 1

Which one of the following is NOT the role of Nitric oxide ?

Options :

41652946918. Serving as neurotransmitter in CNS

41652946919. Relaxing vascular smooth muscle

41652946920. Inducing platelet aggregation

41652946921. Mediating microbicidal action of macrophages

Question Number : 116 Question Id : 41652912020 Question Type : MCQ Option Shuffling : Yes Display Question Number : Yes
Single Line Question Option : No Option Orientation : Vertical

Correct Marks : 4 Wrong Marks : 1

Which of the following directly inhibits Factor Xa ?

Options :

41652946922. Rivaroxaban

41652946923. Dabigatran

41652946924. Warfarin

41652946925. Bivalirudin

Question Number : 117 Question Id : 41652912021 Question Type : MCQ Option Shuffling : Yes Display Question Number : Yes
Single Line Question Option : No Option Orientation : Vertical

Correct Marks : 4 Wrong Marks : 1

Following are the facts regarding clinical applications of muscarinic receptor blocking drugs.
Identify the false statement :

Options :

41652946926. Marked reflex vagal discharge may stimulate sinoatrial or atrioventricular node to improve cardiac output.

41652946927. Used in the treatment of parkinson's disease is often an exercise in polypharmacy, since no single agent is fully effective.

41652946928. Scopolamine is one among the old remedies used to treat sea-sickness

41652946929. Mydriasis produced greatly facilitates ophthalmoscopic examination of the retina and measurement of refractive error in uncooperative patient.

Question Number : 118 Question Id : 41652912022 Question Type : MCQ Option Shuffling : Yes Display Question Number : Yes
Single Line Question Option : No Option Orientation : Vertical

Correct Marks : 4 Wrong Marks : 1

Which of the following anticonvulsants have both inhibition of excitatory glutamatergic synapse and facilitation of GABA mediated Cl^- channel opening action ?

Options :

41652946930. Phenytoin

41652946931. Valproate

41652946932. Topiramate

41652946933. Ethosuximide

Question Number : 119 Question Id : 41652912023 Question Type : MCQ Option Shuffling : Yes Display Question Number : Yes
Single Line Question Option : No Option Orientation : Vertical

Correct Marks : 4 Wrong Marks : 1

Which is NOT true about calcitriol ?

Options :

41652946934. It enhances reabsorption of calcium and phosphate from bone

41652946935. Enhances absorption of calcium and phosphate from intestine

41652946936. It is active form of Vit D₃

41652946937. It prevents tubular reabsorption of calcium and phosphate

Question Number : 120 Question Id : 41652912024 Question Type : MCQ Option Shuffling : Yes Display Question Number : Yes
Single Line Question Option : No Option Orientation : Vertical

Correct Marks : 4 Wrong Marks : 1

The term 'aneurysm' refers to :

Options :

41652946938. Permanent blockage of blood vessels

41652946939. Permanent abnormal dilatation of blood vessel

41652946940. Abnormal connections in blood vessels

41652946941. Abnormal growth of neurones near blood vessels

Question Number : 121 Question Id : 41652912025 Question Type : MCQ Option Shuffling : Yes Display Question Number : Yes
Single Line Question Option : No Option Orientation : Vertical

Correct Marks : 4 Wrong Marks : 1

Which of the following is true ?

Excessive use of diuretics can lead to :

Options :

41652946942. Neurogenic shock

41652946943. Hypervolemic shock

41652946944. Cardiogenic shock

41652946945. Hypovolemic shock

Question Number : 122 Question Id : 41652912026 Question Type : MCQ Option Shuffling : Yes Display Question Number : Yes
Single Line Question Option : No Option Orientation : Vertical

Correct Marks : 4 Wrong Marks : 1

Which of the following cells are called scavenger cells ?

Options :

41652946946. Macrophages

41652946947. Neutrophils

41652946948. Natural killer cells

41652946949. Mast cells

Question Number : 123 Question Id : 41652912027 Question Type : MCQ Option Shuffling : Yes Display Question Number : Yes
Single Line Question Option : No Option Orientation : Vertical

Correct Marks : 4 Wrong Marks : 1

Characteristic microscopic features observed in Alzheimer's disease is :

Options :

41652946950. Depigmentation of substantia nigra

41652946951. Demyelination of neurons in spinal cord

41652946952. Presence of neuritic plaques containing A β -amyloid

41652946953. Epidural haemorrhagic patches

Question Number : 124 Question Id : 41652912028 Question Type : MCQ Option Shuffling : Yes Display Question Number : Yes
Single Line Question Option : No Option Orientation : Vertical

Correct Marks : 4 Wrong Marks : 1

Metabolic acidosis does NOT occur during :

Options :

41652946954. Starvation

41652946955. Chronic renal failure

41652946956. Uncontrolled diabetes mellitus

41652946957. Wound healing

Question Number : 125 Question Id : 41652912029 Question Type : MCQ Option Shuffling : Yes Display Question Number : Yes
Single Line Question Option : No Option Orientation : Vertical

Correct Marks : 4 Wrong Marks : 1

What is anaplasia ?

Options :

41652946958. Morphological and functional resemblance to normal cells

41652946959. Lack of growth of cells

41652946960. Increase in size of cell

41652946961. Morphological and functional alterations/changes, that are different from normal cells